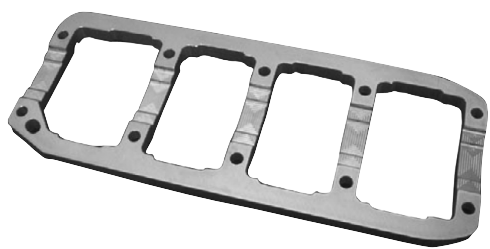
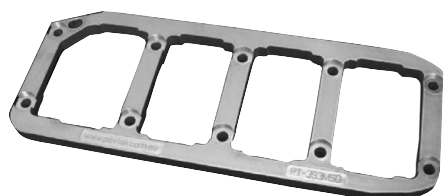


New Release

Main stud Girdle



FORD^{for} **Windsor** **V8's**

- Made from super strong 3/4" thick 6061 T6 aluminium.

- Evenly distributes load & dampens harmonics that cause main cap walk.
- A great alternative to expensive steel cap conversions.
- Great for stroked, blown or nitrous engines.
- Quality Australian made product.
- Fitting instructions included.

Part number CCG302

AUSTRALIA

1300 364 350

NEW ZEALAND

0508 364 350

